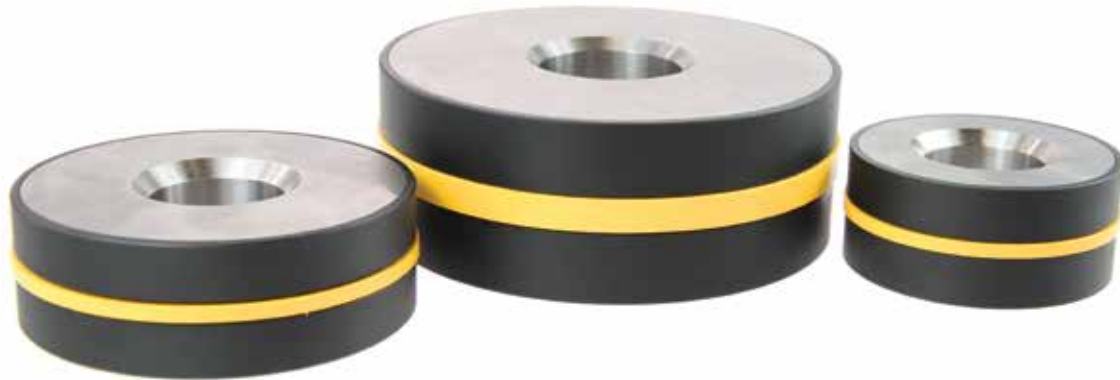


EASY, RELIABLE SOLUTION

Need a ready to fit piston?

# Unitised Pistons

Hallite 



## Benefits

- Reduction in premature failures and warranty claims
- Ease of field service and retrofit
- Extends cylinder performance life
- Heavy duty, high pressure capabilities for today's high pressure systems

Originally designed and patented by Hallite over 35 years ago, the Unitized Piston eliminates any possibility of metal to metal contact and increases sealing performance.

An accepted solution for Construction, Off-Highway and Agricultural cylinders, the Unitized Piston provides the customer with proven extended service life while significantly reducing manufacturing, warranty and assembly costs.

Produced in a wide range of sizes, bearing and seal materials, Hallite's unique Unitized Piston is compatible with the most demanding applications, off-duty cycles, temperatures and pressures, and can be custom designed for OEM applications up to 14" in diameter. Capable for use in high pressure systems (5,000 to 10,000psi; 345 to 690 bar continuous).

## Materials

The materials used for the Standard Unitized Piston are selected to handle a broad range of application parameters.

It is constructed using four components:

- High strength steel body
- Non-metallic bearing
- Rubber loading ring
- Filled PTFE seal ring (inch sizes)
- Polyurethane seal ring (metric sizes)

Exclusively distributed by

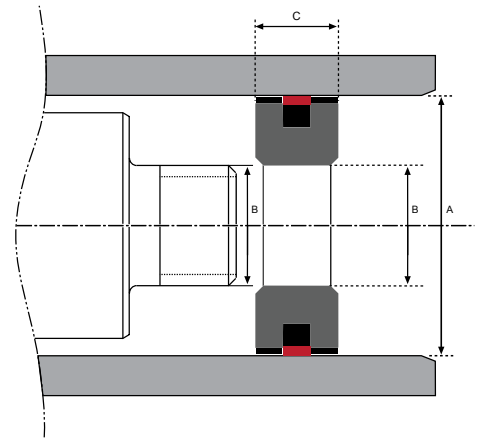
Pacific Seals, 1D Quadrant Drive, Gracefield, Lower Hutt [www.pacificseals.co.nz](http://www.pacificseals.co.nz) 04 566 3180

0800 822 722



# Unitised Pistons

Hallite type 720



## Reference dimension chart

### Metric

A (OD)	TOL H9	B (ID)	TOL	C (Height)	TOL	Part No.
32.00	+0.06 -0.00	12.00	+0.05 -0.00	25.00	+0.20 -0.00	10500
40.00	+0.06 -0.00	16.00	+0.05 -0.00	25.00	+0.20 -0.00	10501
50.00	+0.06 -0.00	20.00	+0.05 -0.00	25.00	+0.20 -0.00	10495
60.00	+0.07 -0.00	25.00	+0.05 -0.00	25.00	+0.20 -0.00	10497
63.00	+0.07 -0.00	25.00	+0.05 -0.00	25.00	+0.20 -0.00	10498
70.00	+0.07 -0.00	25.00	+0.05 -0.00	29.00	+0.20 -0.00	10499
80.00	+0.07 -0.00	25.00	+0.05 -0.00	29.00	+0.20 -0.00	10502
100.00	+0.09 -0.00	32.00	+0.05 -0.00	40.00	+0.20 -0.00	10503

### Imperial

A (OD)	TOL H9	B (ID)	TOL	C (Height)	TOL	Part No.
1.500	+0.003 -0.000	0.500	+0.002 -0.000	1.000	+0.200 -0.000	10510
2.000	+0.003 -0.000	0.750	+0.002 -0.000	1.000	+0.200 -0.000	38324
2.250	+0.003 -0.000	1.000	+0.002 -0.000	1.000	+0.200 -0.000	38325
2.500	+0.003 -0.000	1.000	+0.002 -0.000	1.000	+0.200 -0.000	38326
3.000	+0.003 -0.000	1.000	+0.002 -0.000	1.000	+0.200 -0.000	38327
3.500	+0.004 -0.000	1.000	+0.002 -0.000	1.000	+0.200 -0.000	10511
3.500	+0.004 -0.000	1.000	+0.002 -0.000	1.500	+0.200 -0.000	38328
4.000	+0.004 -0.000	1.000	+0.002 -0.000	1.000	+0.200 -0.000	10512
4.000	+0.004 -0.000	1.000	+0.002 -0.000	1.500	+0.200 -0.000	38329
4.500	+0.004 -0.000	1.000	+0.002 -0.000	1.500	+0.200 -0.000	10513
5.000	+0.004 -0.000	1.500	+0.002 -0.000	1.250	+0.200 -0.000	10514
5.000	+0.004 -0.000	1.500	+0.002 -0.000	1.750	+0.200 -0.000	10515
6.000	+0.004 -0.000	1.500	+0.002 -0.000	2.500	+0.200 -0.000	10516